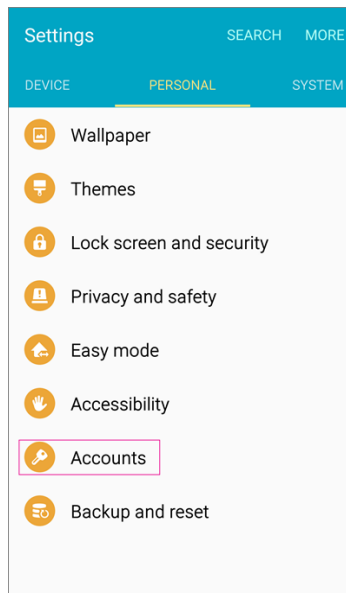


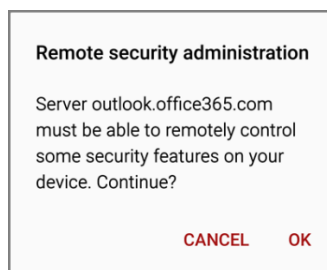
# MTI E-Mail for Android

The following steps are required to configure Microsoft Exchange ActiveSync on most Android phones or tablets. Settings may vary by brand and model.

1. Tap Settings > Accounts > Add account > Email.



2. Type your full email address, for example adams455@mitchelltech.edu, type your password, and then tap Next.
3. Select the Exchange option.
4. Select OK to continue.



5. Once the device verifies the server settings, the Account Options page opens. Accept the defaults or select the options for how you want to receive and send your mail, and then tap Next. (You may need to scroll down to see Next.)
6. On the Set up email page you can change the name of your account. When you're finished tap Done.